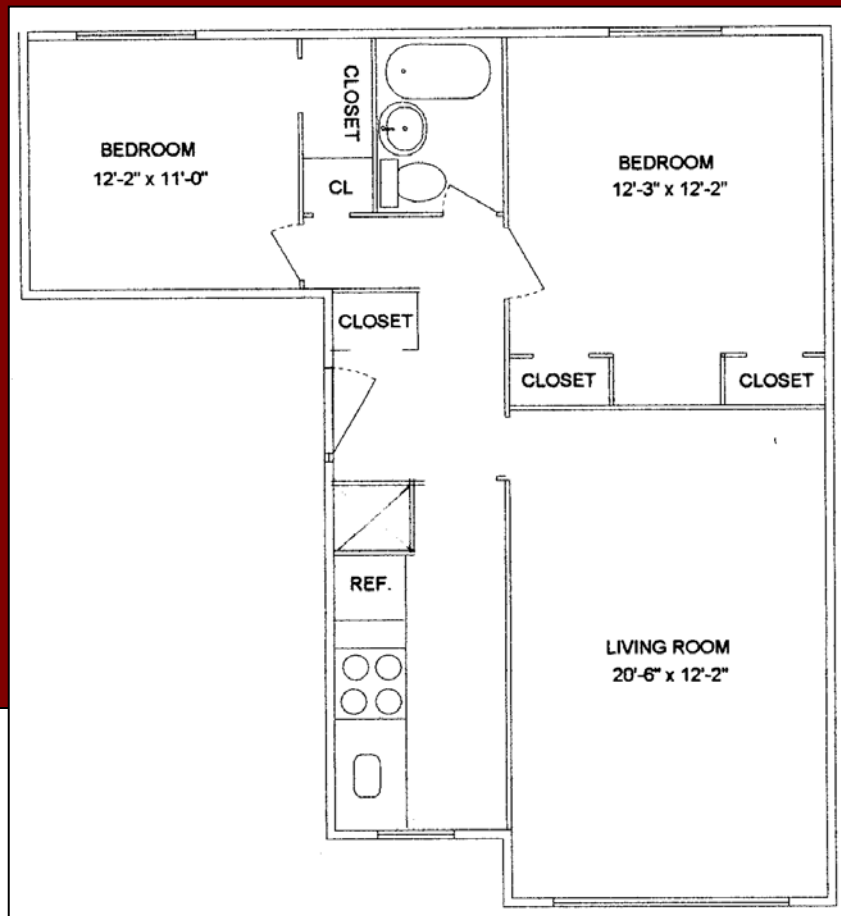
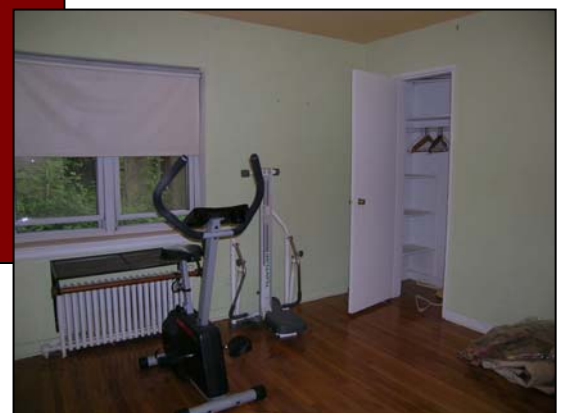


Welcome to
40 Glenwood Ave, Unit 1G
Jersey City, NJ 07306
\$250,000

Two bedroom units in the Glenwood Condos rarely come up for sale. This spacious 786 sq. ft. unit on the 1st floor faces the landscaped courtyard. The location is quiet and convenient, near St. Peter's College and only .7 miles from the Journal Square PATH station. Maintenance fee (which includes heat and hot water) is \$217 per month and taxes are \$196 per month.

For more information, photos and a tour go to
www.JoanProut.com



Joan Prout
Broker Sales Associate

306 Grove Street
Jersey City, NJ 07302
201-946-2700x310
JoanProut@Remax.net

www.JoanProut.com



Each office independently owned and operated.
Information deemed reliable but not guaranteed.

**40 Glenwood Ave
Jersey City, NJ 07306
Glenwood Condos**

At the date of this listing, the management company for Glenwood Condos would like potential buyers and their agents to be aware of the following fees and costs that the buyer will be responsible for. This is not meant to be an all-inclusive list of fees, and it is subject to change. Please contact Gerber/Somma Associates for the most current information.

Management Company:

Gerber/Somma Associates
210 River St
Hackensack, NJ 07601
(201) 646-1234
Contact: Judy

Move In and Move Out Fee	None
At Closing: <ul style="list-style-type: none">• 3 Months Maintenance• Portion of the Insurance (will be given prior to closing)	<ul style="list-style-type: none">• \$651• TBD
Bylaws, Deed, Rules/Regulations	\$50 deposit and you can make a copy of them.
Condo Questionnaire	\$25